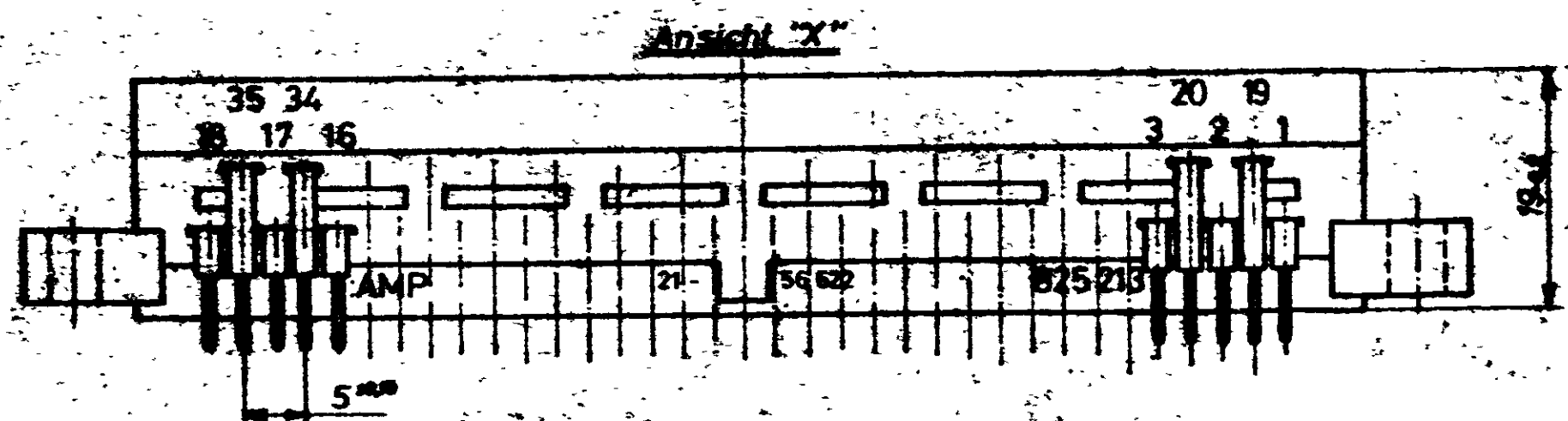
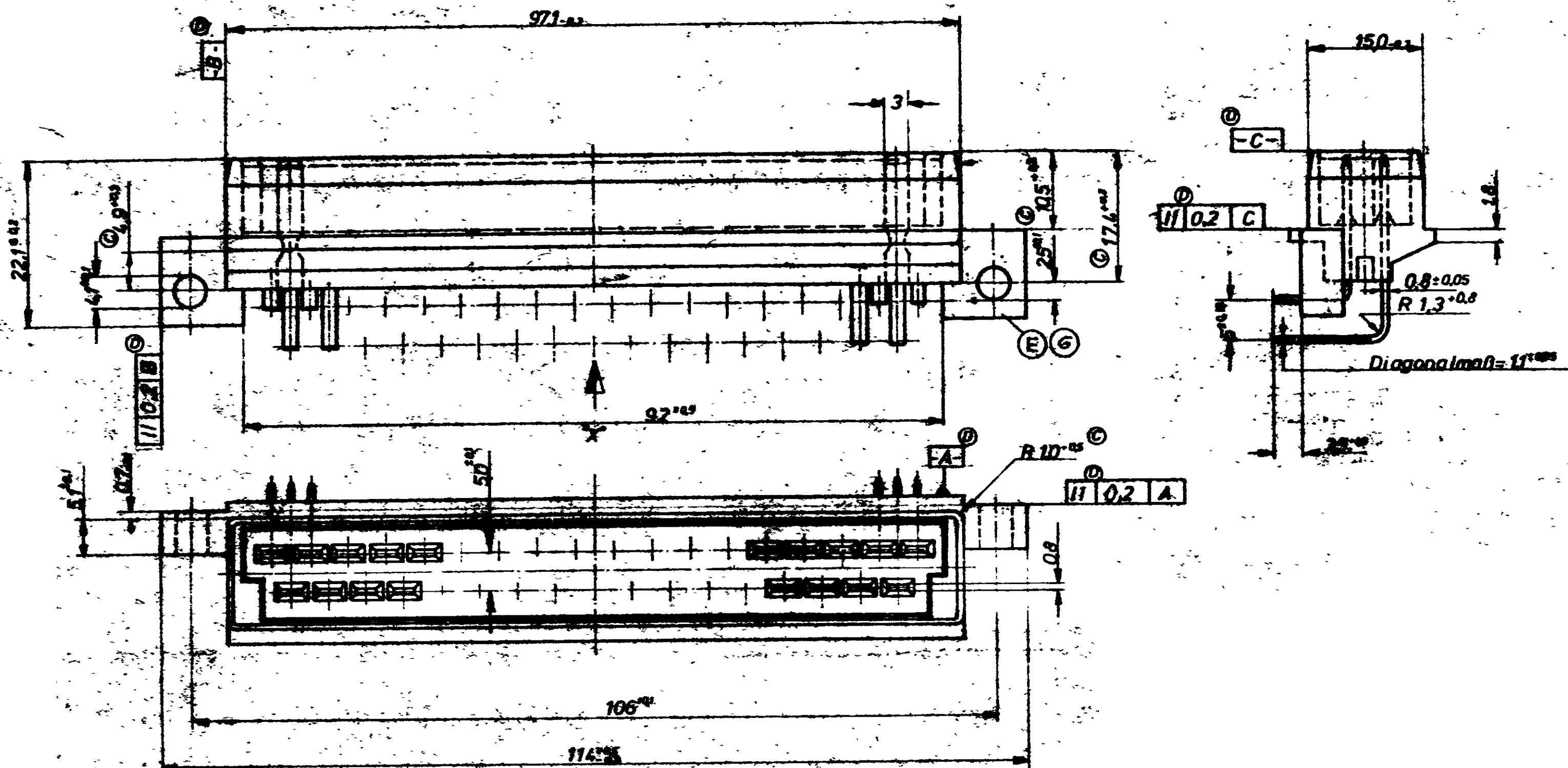


European Projection



CUSTOMER COPY
REFERENCE ONLY

Bestell-Nr.	Material	Farbe	Messer
825213-3	PA6.6 GY 13	schwarz	messvergoldet
825213-2	PA66 GY 13	schwarz	messvergoldet
825213-1	PA66GV35SE0	schwarz	Ms.verzinkt
1-825 213-5	Polyamid 6.6 GY 13	schwarz	Ms.verzinkt

Maße ohne Toleranzangabe: 0.4

REV	DESCRIPTION	DATE	BY	CHKD	APP'D	REVISION RECORD	SCALE	DATE	DESCRIPTION	REV	DATE	DESCRIPTION
L1	REVISED PER ECO-11-005294	11 APR	RK									

REV	DESCRIPTION	DATE	BY	CHKD	APP'D	REVISION RECORD	SCALE	DATE	DESCRIPTION
2:1	35 pol. Messerleiste								

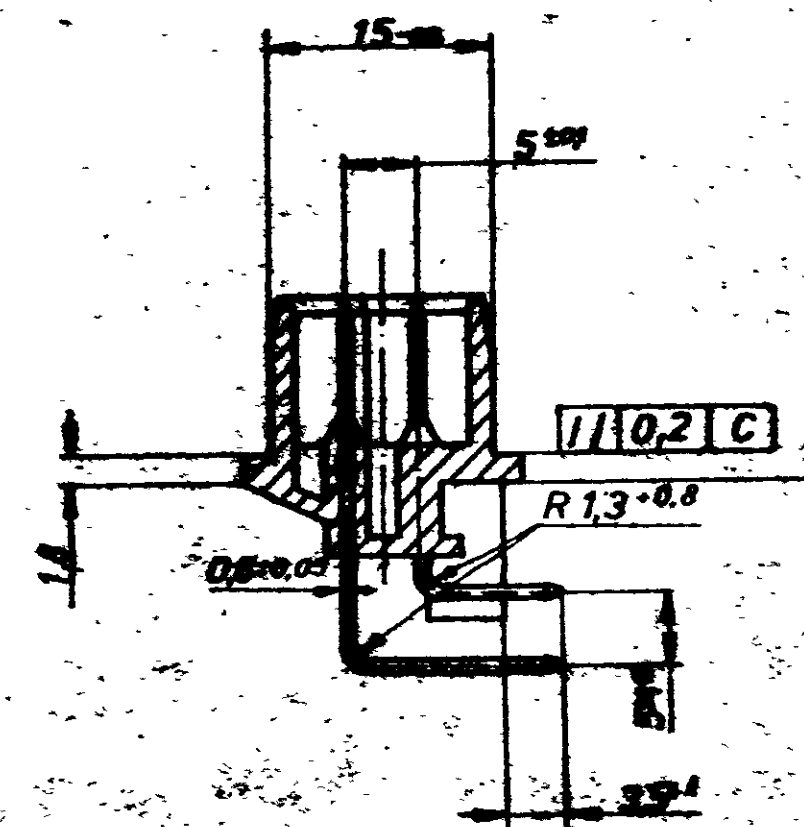
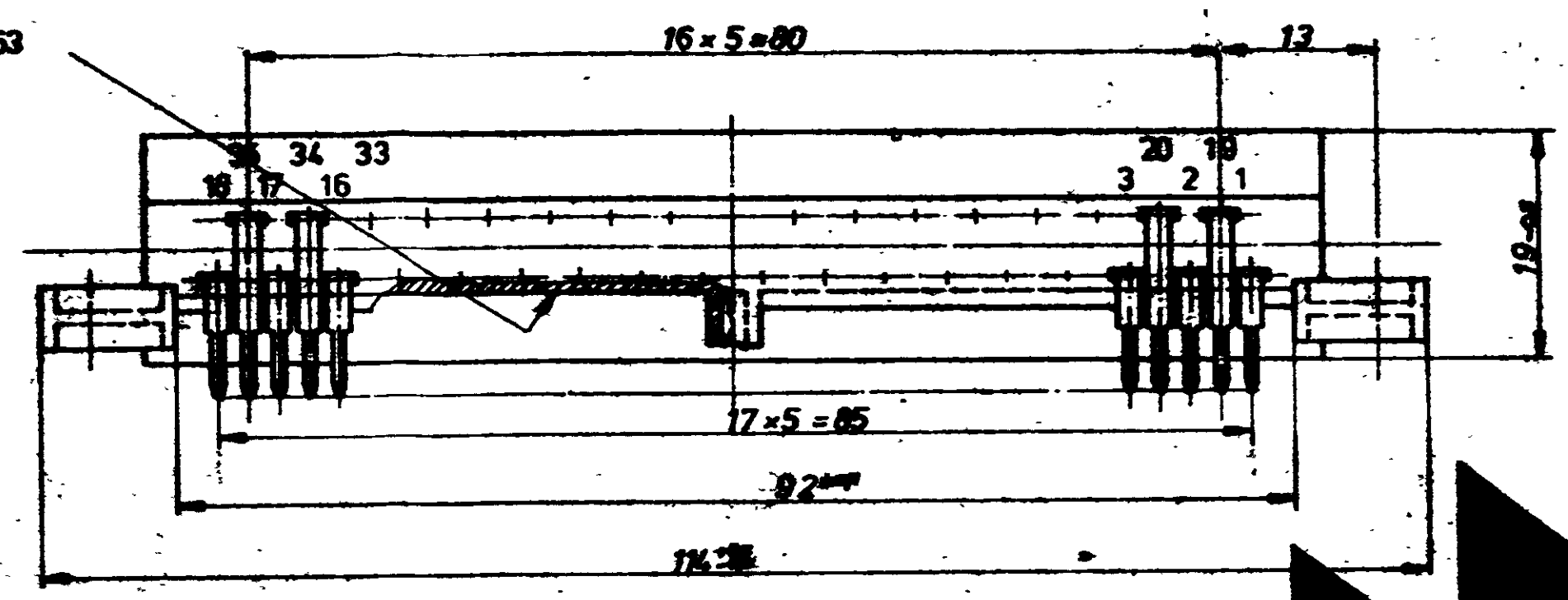


825 213

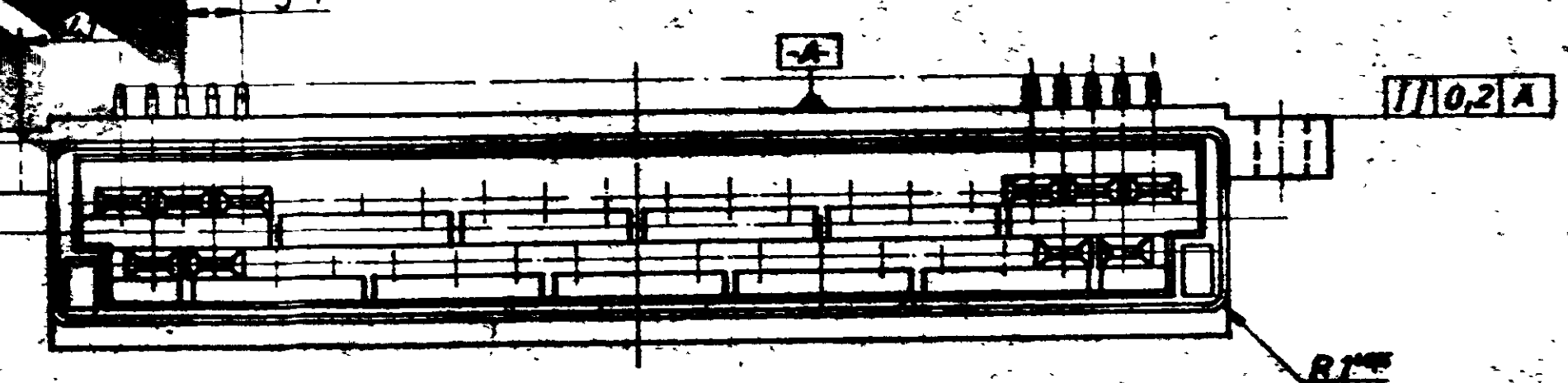
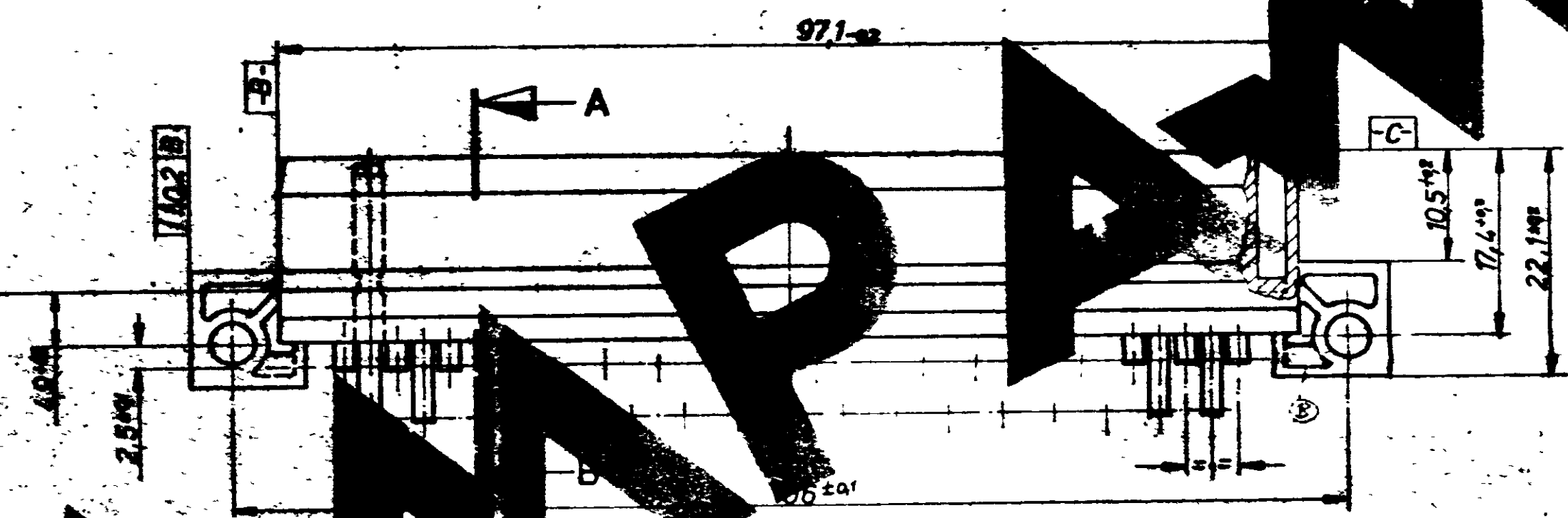
35 pol. Messerleiste

Index	Änderung	Tage	Name
	SEE SHEET 1		

Werkzeug-Nr. 21-57063



Schnitt A-B



Bestell-Nr.	Geh. Material	Farbe	Messer Werkstoff	Oberfläche
2-825213-3	PA 6.6GV13	schwarz	Cu Zn 30	Au galv.
2-825213-2	PA 6.6GV13	schwarz	Cu Zn 30	Ag galv.
2-825213-1	PA66 GV35 SED	schwarz	Cu Zn 30	Sn galv.
2-825213-5	PA 6.6GV13	schwarz	Cu Zn 30	Sn galv.

Bestell-Nr.		Werkstoff	Oberfläche	Farbe	Abst. toleranz Maß	Formel	Abmessung - Nr.
17.11.01		15.3.82			± 0.2 mm ± 1.5°	C	825 213
				2:1		2 v. 2	

TE TE Connectivity
35pol. Messerleiste **K**